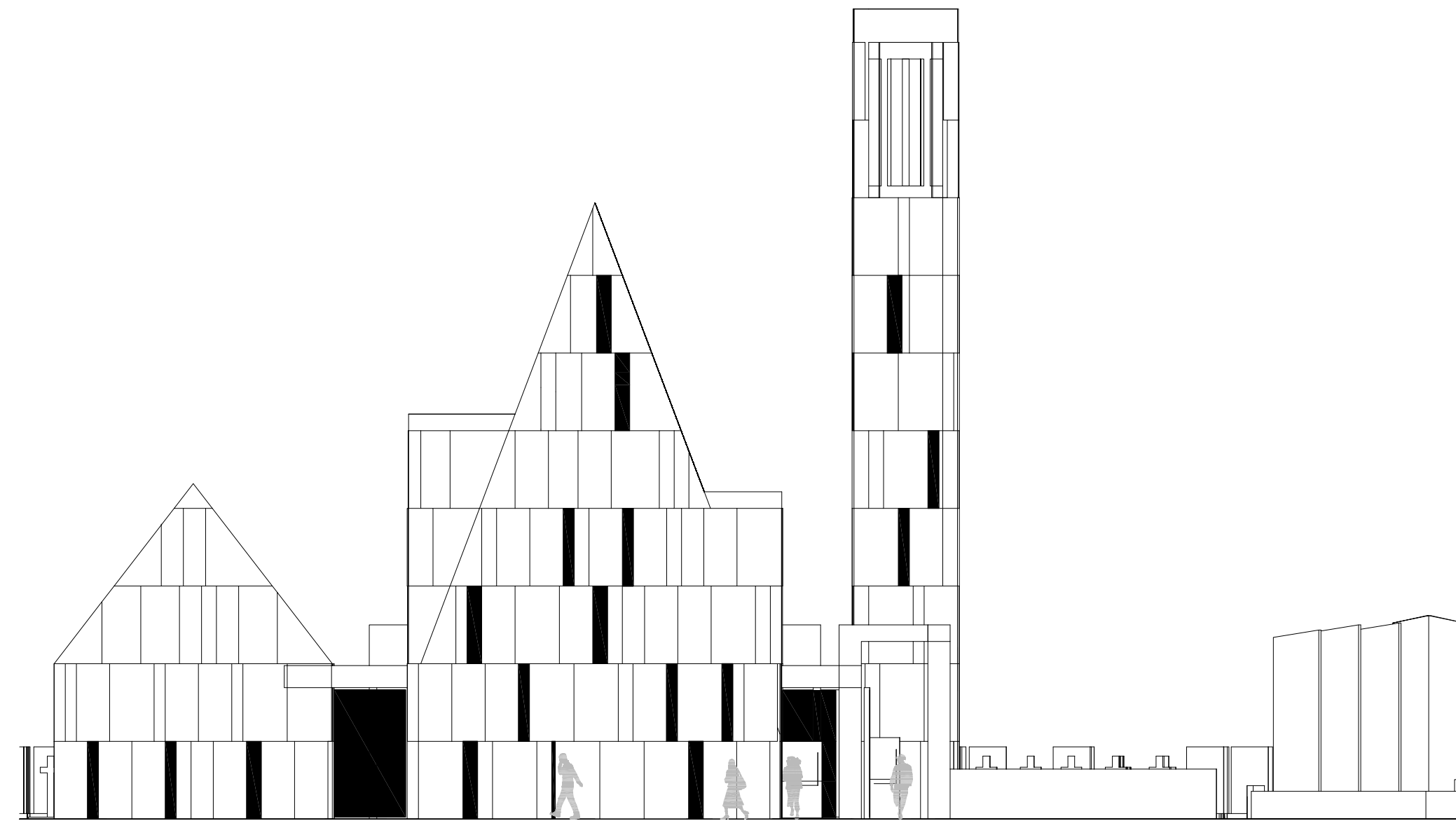
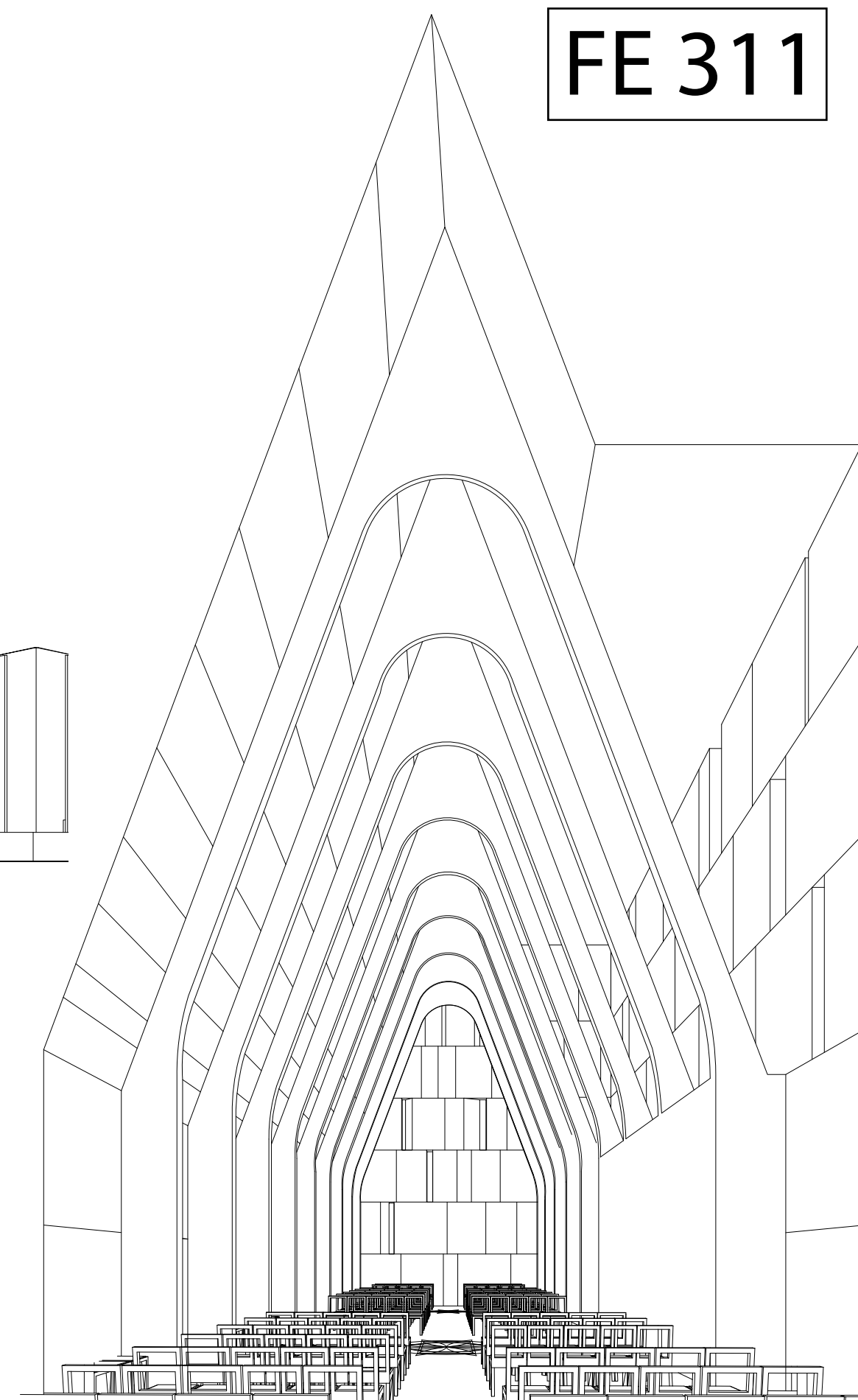


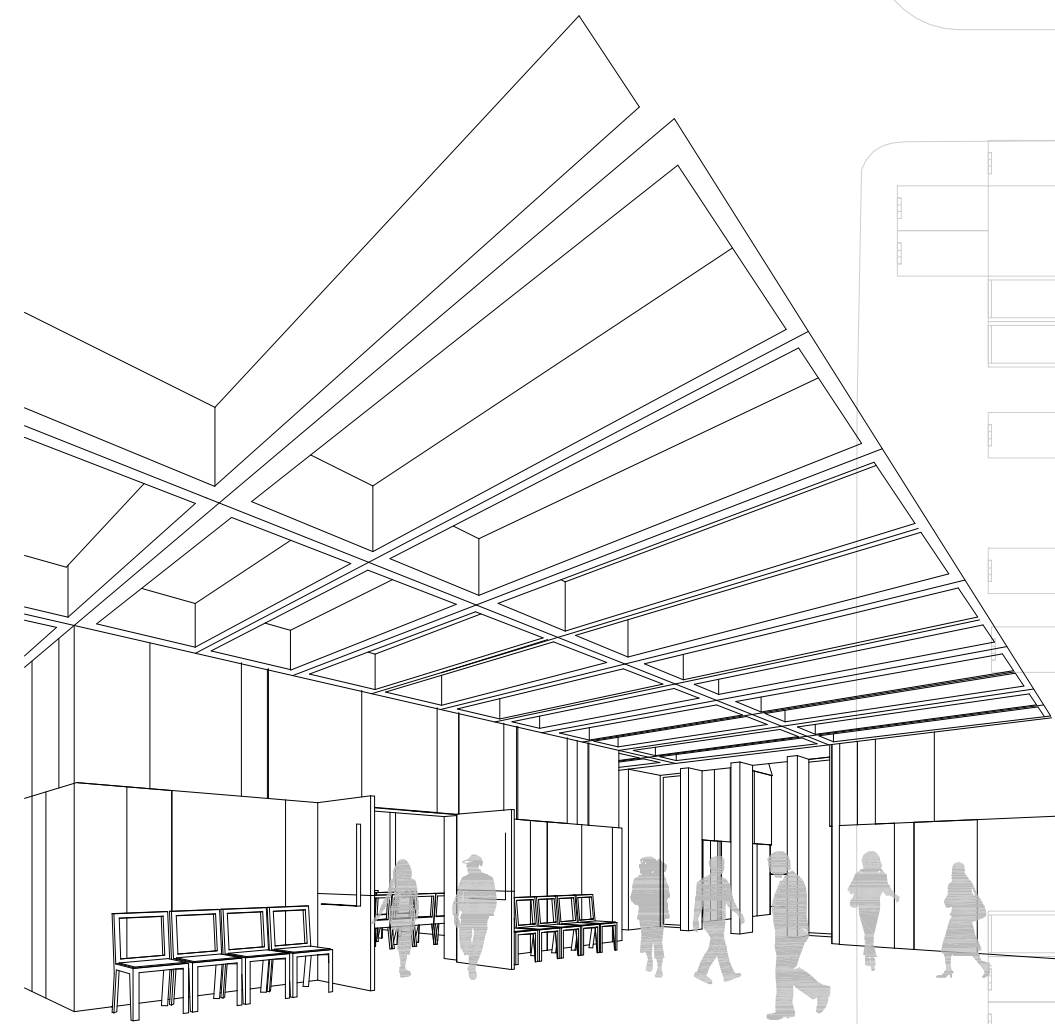
Skewed Elevation to the North West (approach)



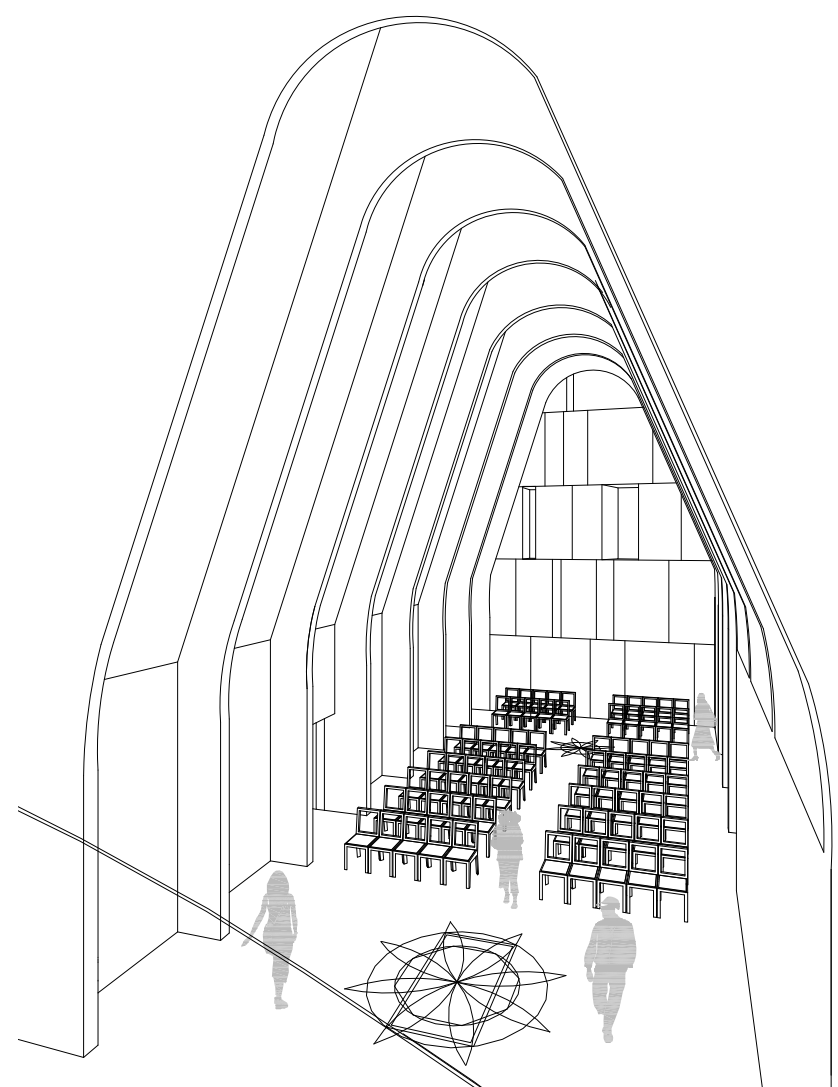
Main Elevation to the East



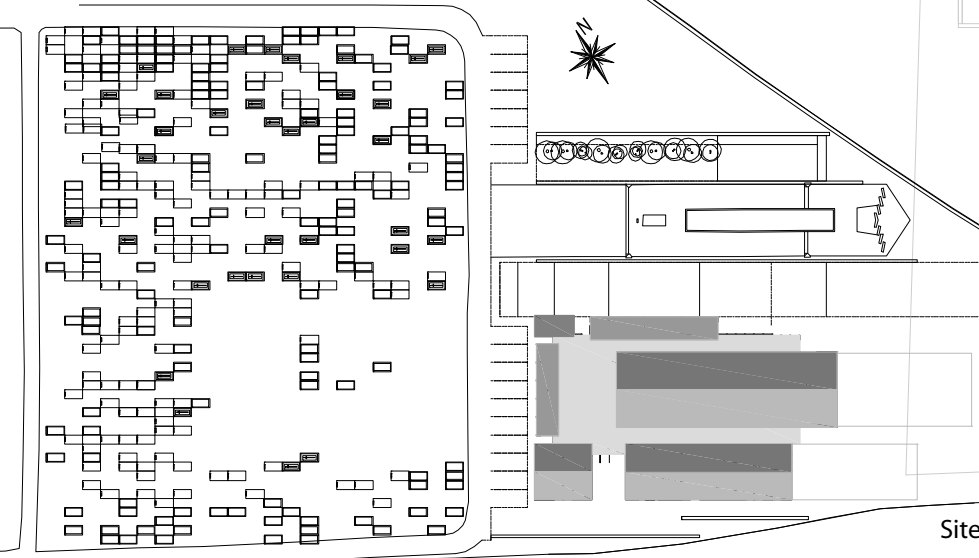
Main Ceremonial Interior



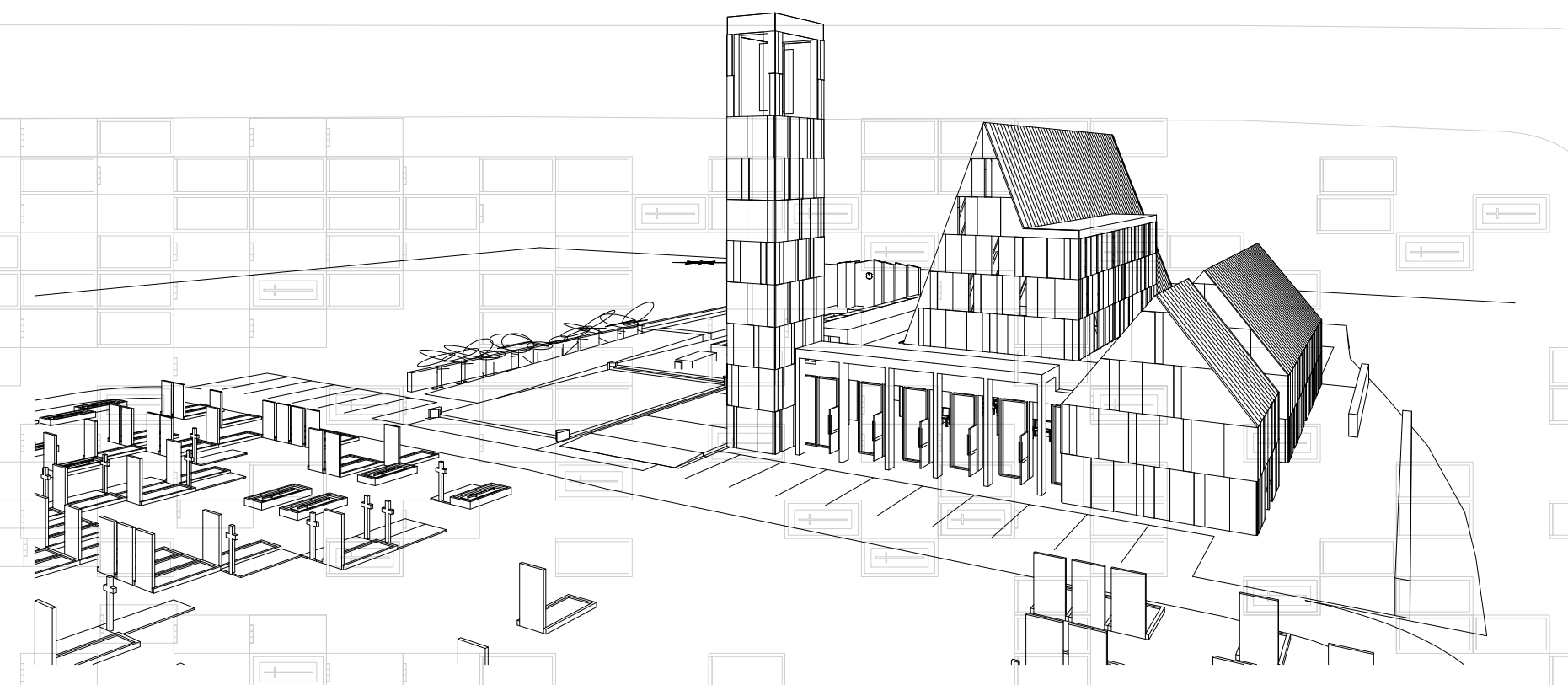
Main Foyer Entrance Room



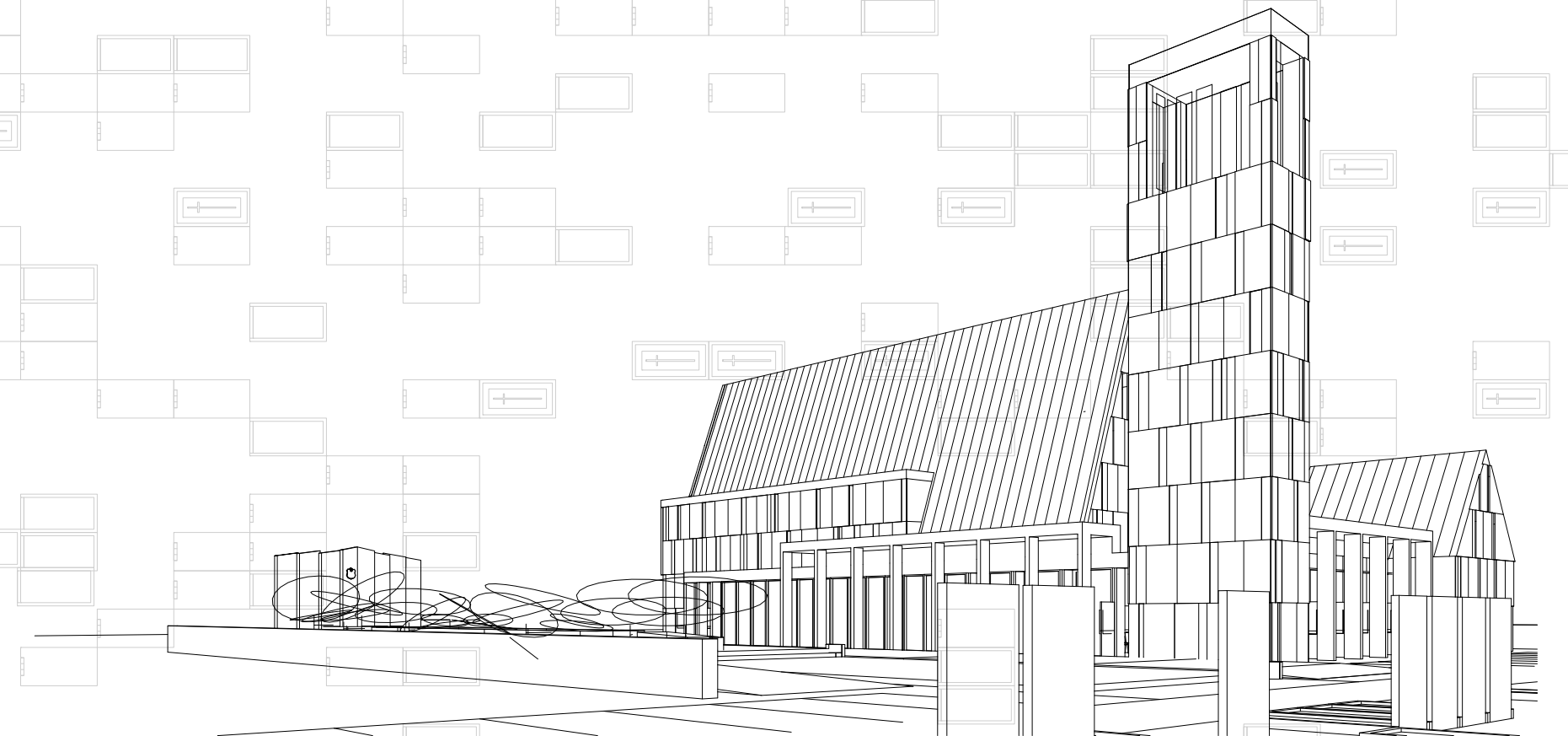
Main Chapel Temple Space



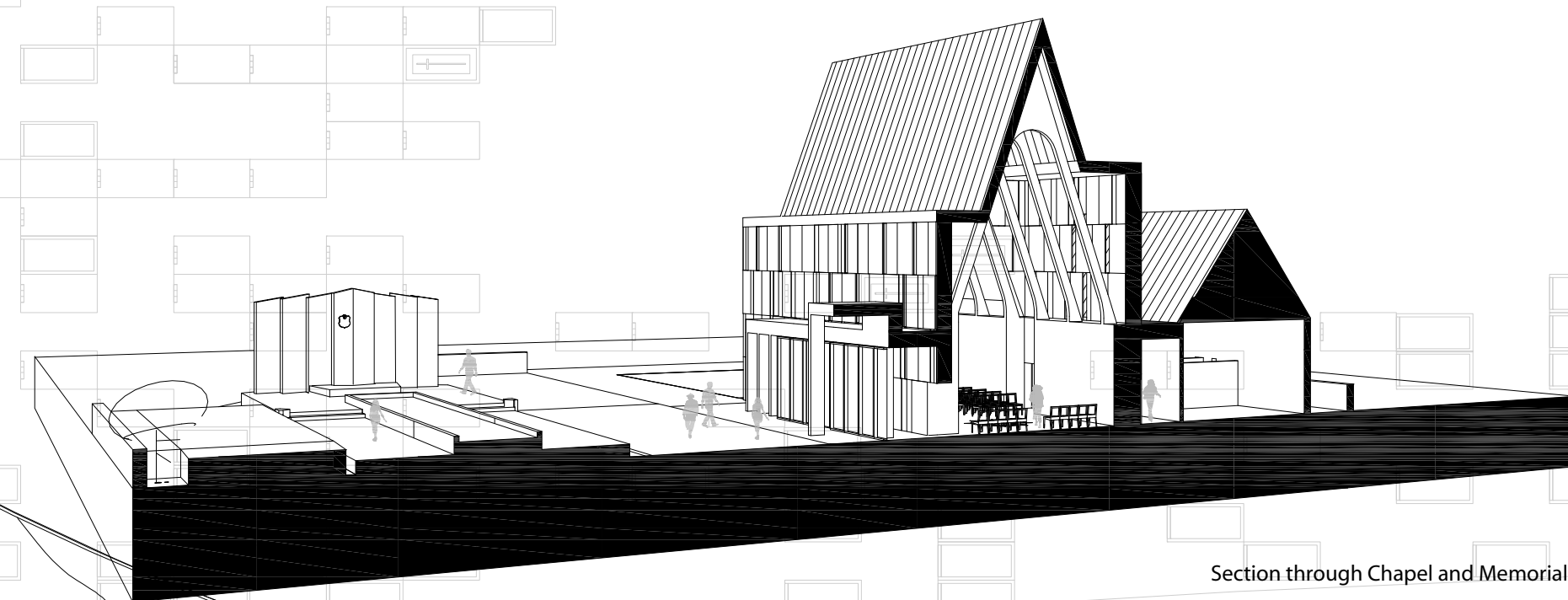
Site Plan 1:1000



View from over Cemetery towards the East



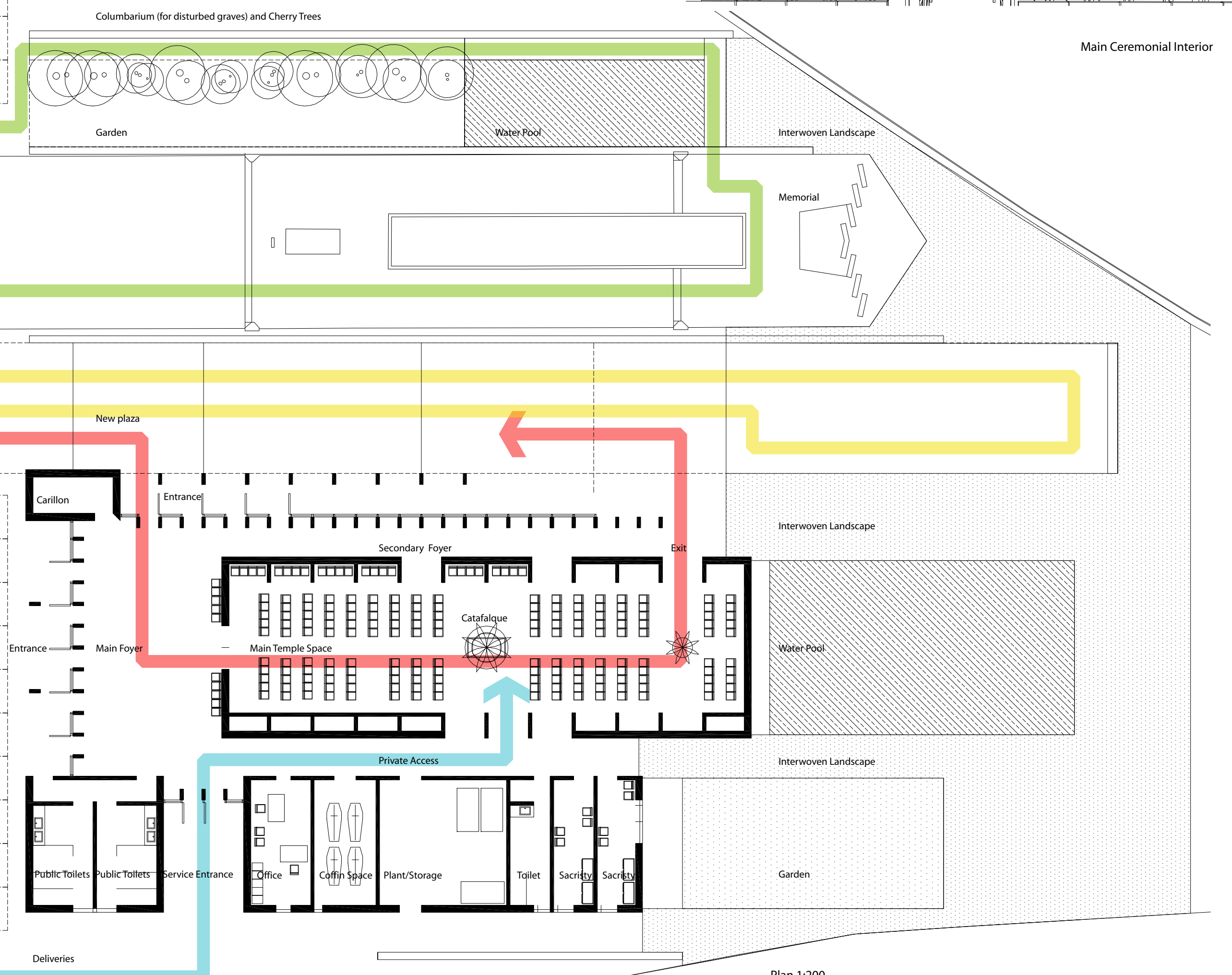
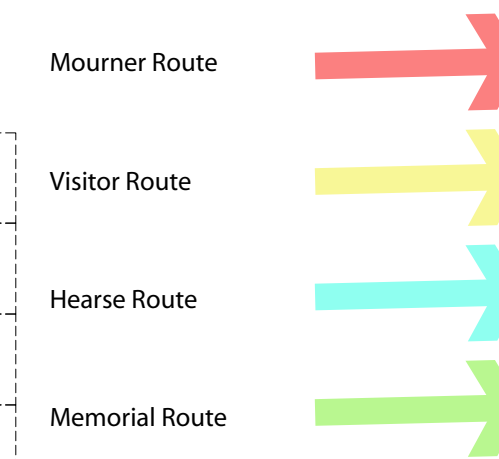
View approaching the Chapel/Temple



Section through Chapel and Memorial

architecture and meaning

This work is an attempt to imbue a sense of gravitas and resonance to the making of space. Purposefully the composition is resonant of that found in St. Kevin's chapel at Glendalough or other ancient temples. The composition is based on four "stones", an analogy for the landscape strategy and for the tectonic expression of its large blocks of reconstituted concrete/stone. Light enters in between these large elements conveying their quarried logic. In a field of monuments the work rises up on the same proportional grid as its graves. Anchored and anchoring the 1916 Centenary Chapel is a place of the past, for now and the future.



Plan 1:200

1916 Centenary Chapel at Glasnevin Cemetery